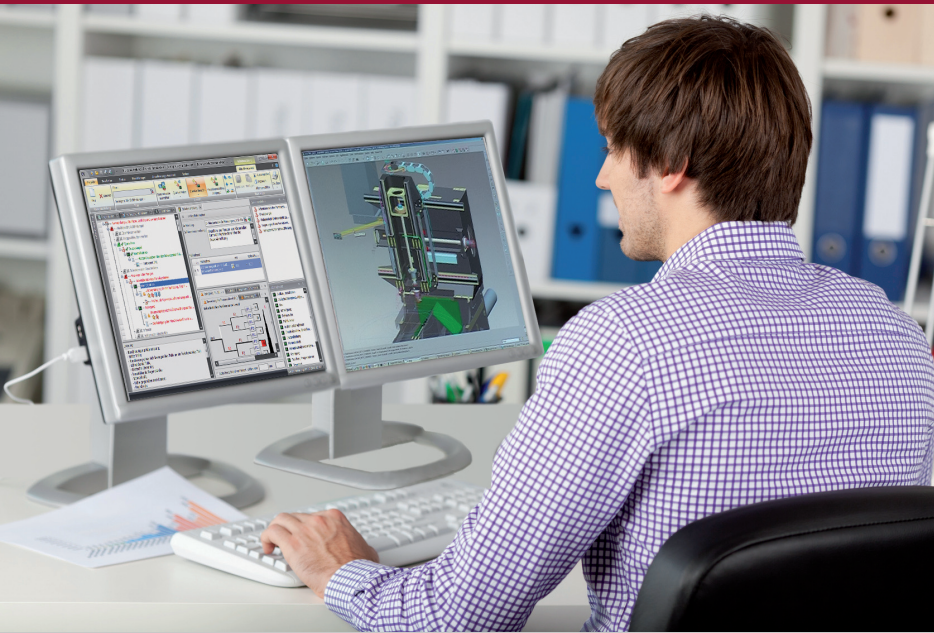


Risk Assessment

ANSI / ISO 12100
EN ISO 12100 AS 4024



The practical software tool
for Risk Assessment of
machinery and plants

Available languages:
German, English, French



Safexpert

iBf
Automation & Safety
TECHNOLOGY

Safety of machinery and plants

Standards compliant Risk Assessment

Systematic - Simple - Efficient

International standards for risk assessment

Safexpert is based on the international standard ISO 12100 which provides an important basis for the safety-relevant mechanical and plant engineering in Europe (EN ISO 12100), USA (ANSI/ISO 12100), Australia (AS 4024) and in the Eurasian economic area.

Maximum overview for risk assessments

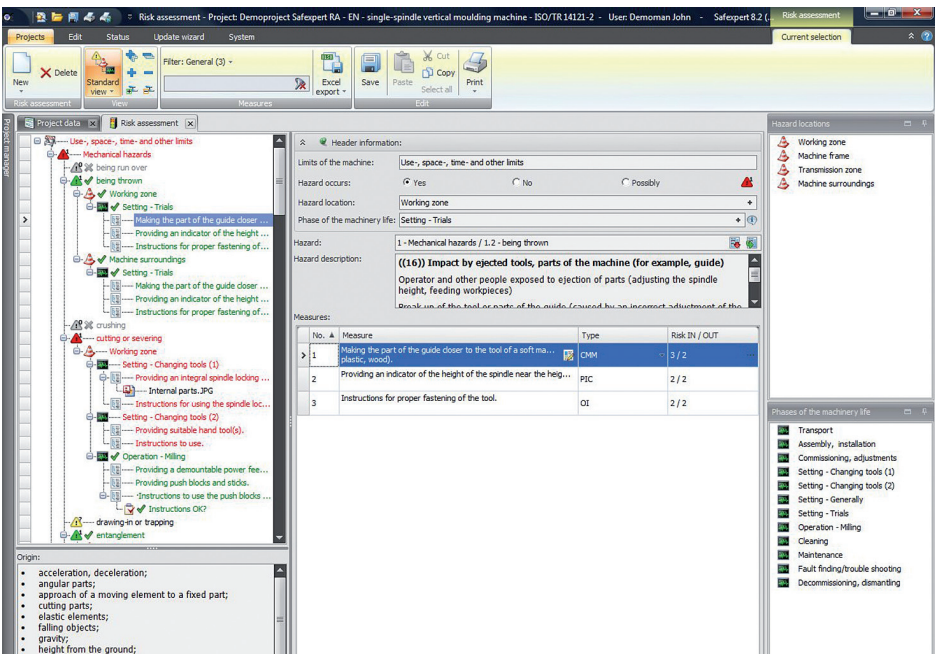
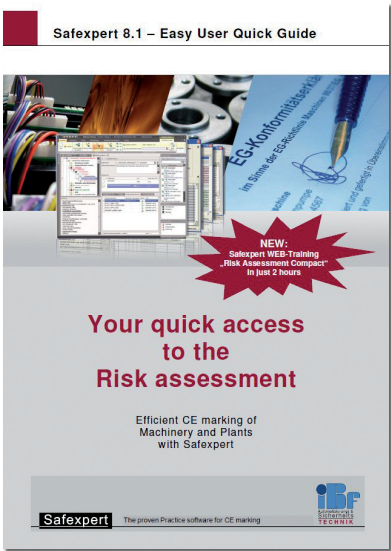
All important data for risk assessment is stored and documented in a clear and structured manner.

Keep order in your projects

With Safexpert you manage projects and templates centrally and clearly.

Easy to handle

The „Easy User Reference Guide“ leads you through risk assessment with Safexpert. You do not need any software training in order to work with Safexpert!



You always have an overview of all hazards, hazard locations, phases of machinery life and measures for risk assessment. Colourful display modes and filter functions support you not to oversee important issues.

Manage projects						
Actions						
Filter: General (3) -						
Display: All -						
Manage a project						
Adjust						
Template	Project type	Project number	Project name	Created by	Created on	Completed
	Project	PRJ-2013-04-18-0003	Adhesion system - demo project	Demoman John	18.04.2013 11:38	
	Project	PRJ-2014-02-21-0001	Template project: Lifting device	Smith Peter	21.02.2014 11:12	
	Project	PRJ-2014-02-21-0002	Continuous handling equipment	Smith Peter	21.02.2014 11:14	
	Module	PRJ-2014-02-21-0003	Decoller	Mills Paul	21.02.2014 11:16	
	Project	PRJ-2014-02-21-0004	Spindle moulders	Demoman John	21.02.2014 11:17	
	Project	PRJ-2014-02-21-0005	Stationary grinding machine	Mills Paul	21.02.2014 11:24	
	Project	PRJ-2014-02-21-0006	Belt conveyor	Smith Peter	21.02.2014 11:26	
	Module	PRJ-2014-02-21-0007	Feeding unit	Smith Peter	21.02.2014 11:26	

Safexpert stores your projects and risk assessments in a database on your PC or on a central company server. You can be sure that you always find the required data in the current version.

„After determination of the limits of the machinery, the essential step in any risk assessment of the machinery is the systematic identification of reasonably foreseeable hazards [...], hazardous situations and/or hazardous events during all phases of the machine life cycle, ...“

ISO 12100, 5.4 - Hazard identification

Risk assessment		PRJ-12-07-0001 - Demoprojekt Safexpert RA - EN - single-spindle vertical moulding machine - ISO/TR 14121-2		Printed: 17.12.2013	
Phase of the machinery life		Hazard location		Hazard	
Hazard description		No.		Measures for risk reduction	
Risk IN (before measure)		Type		Risk OUT (after measure)	
SH	DS	RA	PO	V	PL / SIL
Applied documents, attached images and files		SH		DS	RA
Risk adequately reduced No / Yes		Name		Date	
Setting - Changing tools (1)		Working zone		cutting or severing	
((2)) Cutting fingers or hands at sharp tool edges					
Working near/with the tool (fastening/unfastening)					
Contact with sharp edges due to spindle rotation caused by fastening/unfastening force					
O	P	M	I	5	
1		Providing an integral spindle locking system (see Figure)		CMM	
SE		O	H	MI	5
2		Instructions for using the spindle locking system.		OI	
SL		H	SM	0	
Risk adequately reduced <input type="checkbox"/> No <input checked="" type="checkbox"/> Yes		Frick Helmut		17.12.2013	
Setting - Changing tools (2)		Working zone		cutting or severing	
((3)) Cutting fingers or hands at sharp tool edges					
Working near/with the tool (fastening/unfastening)					
Contact with sharp edges due to loss of control, tool slipping by use of unsuitable hand tools					
O	P	M	I	2	
1		Providing suitable hand tool(s).		PPE	
SE		O	H	MI	0
2		Instructions to use.		OI	
SL		H	SM	0	
Risk adequately reduced <input type="checkbox"/> No <input checked="" type="checkbox"/> Yes		Frick Helmut		17.12.2013	

Safexpert 8.2 View: Phases of machinery life - Hazards - Hazard locations Display: All hazards Page 2/5

In Safexpert the risk assessment printout is in a standardised format based on annex B of the technical rule ISO/TR 14121-2. Of course the report templates may be adapted or extended individually, for example including your own logo.

Maximum overview

With just a few mouse clicks you switch the risk assessment into one of the four views. You see at a glance on which hazard locations which hazards occur or which hazards occur in normal operation use, cleaning, maintenance or in other phases of the machinery life.



Industry-specific templates

Are you searching for an expert who has already developed an industry-specific risk assessment of a certain type of machinery which you could use as a template for your projects?

Please visit our homepage and find further information about the Standards Experts Community and the Safexpert Solution Store!

www.ibf.at/solutionstore

Individual support

You do not have a lot of time and are searching for expert assistance for risk assessment? Of course we can find a suitable service provider for you from our partner network.!

www.ibf.at/csp

Advantages at a glance

- Uniform, systematic and standards-compliant risk assessments and printouts
- Status checks of completed and open tasks
- Structuring of plant-projects in modules and interfaces
- In case of changing standards we adapt the software within the context of your service contract.
- Risk assessments are always in standardised format available for public authorities, insurances or later rebuilding.
- Automatic conversion of already existing risk assessments in the case of changes in standards or directives in order to – as far as possible – work without interruption on your projects.
- Easy handling according to the current Windows default for optimally intuitive working.
- With Safexpert you convert hazards lists in your projects within a few seconds between EN ISO 12100, ANSI/ISO 12100 and AS 4024.
- Extendable Modules
- Since 1994 continuously extended and actualized
- TUV certified
- Proven a thousand times

www.ibf.at/en/references

Further information

For your purchasing decision

Free demo version:

www.ibf.at/en/download

Free Live WEB-presentation:

www.ibf.at/en/web-presentation

Free online videos:

www.ibf.at/en/videos

Useful information for your IT-experts

Safexpert runs on current Windows versions and supports VistaDB, MS-SQL Server and optionally Oracle database.

Five different deployment possibilities are available in order to distribute Safexpert in the company network quickly and cost-efficient:

- Classic installation
- Silent installation
- Automatic installation via server (internet update)
- Installation on terminal server
- MSI-package

Support installation and set up of Safexpert

In addition to our technical hotline, we offer individual remote assistance via TeamViewer:

www.ibf.at/en/download



Purchase information	First license		Follow-up license / further users	
	Art.-No.	Unit price	Art.-No.	Unit price
Safexpert Risk Assessment x: DE = German, EN = English, FR = French	4000-SE-ELx	690,00	4000-SE-FLx	430,00
Service contract per year	4000-WV-ELx	160,00	4000-WV-FLx	100,00
2- hours WEB-training: Risk assessment compact with Safexpert	2425	90,00	2425	90,00
European standard EN ISO 12100	EN-ISO12100_2010	176,50		
Technical rule ISO/TR 14121-2	ISO/TR14121-2	112,80		

Prices in Euro plus VAT and ev. postal charges.

Order directly online

You can order directly from our homepage:

www.ibf.at/en



**IBF - Automatisierungs-
und Sicherheitstechnik GmbH**
Bahnhofstr. 8, A-6682 Vils
Phone: +43 (0)56 77 - 53 53 - 0
Fax: + 43 (0)56 77 - 53 53 - 50
office@ibf.at - www.ibf.at

IBF Solutions AG
Kronenstr. 25
CH-8006 Zürich
Phone: +41 44 515 85 50
office@ibf-solutions.ch
www.ibf-solutions.ch

IBF Sales & Consulting GmbH
Heilbronner Str. 150
D-70191 Stuttgart
Phone: +49 (0)711 99 594 - 0
office@ibf-sc.de
www.ibf-sc.de